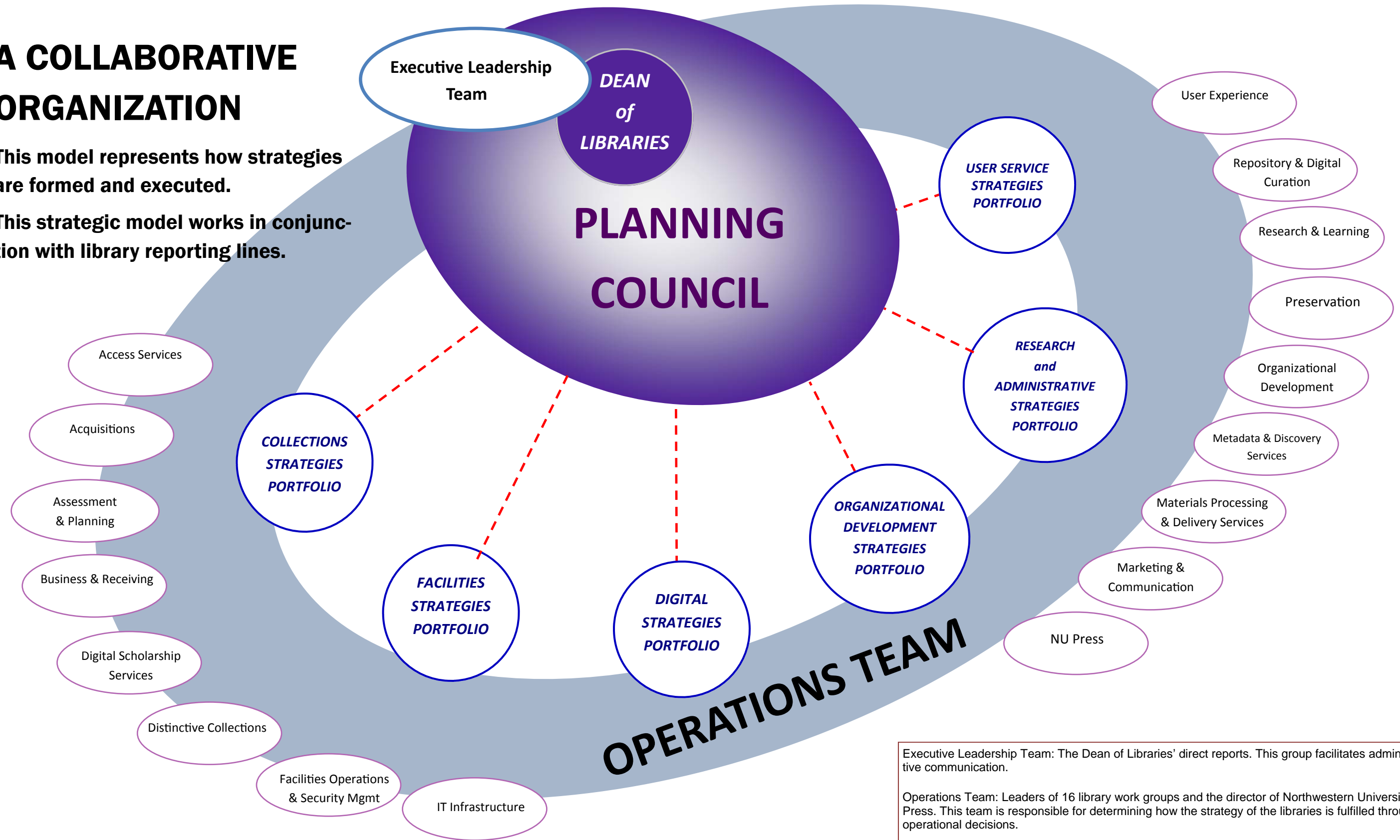


A COLLABORATIVE ORGANIZATION

This model represents how strategies are formed and executed.

This strategic model works in conjunction with library reporting lines.



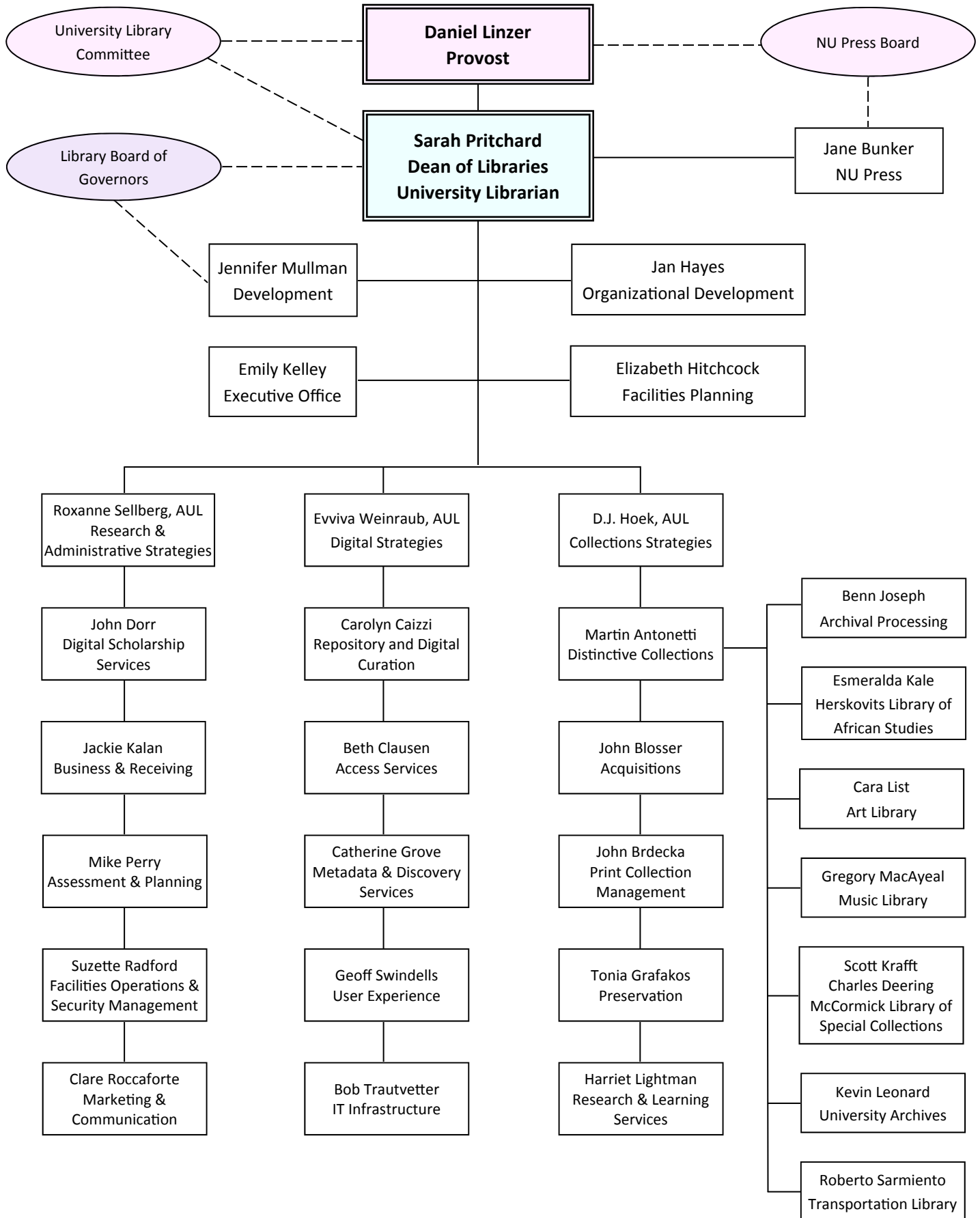
Executive Leadership Team: The Dean of Libraries' direct reports. This group facilitates administrative communication.

Operations Team: Leaders of 16 library work groups and the director of Northwestern University Press. This team is responsible for determining how the strategy of the libraries is fulfilled through operational decisions.

Planning Council: This body is made up of the Dean of Libraries; the Portfolio Holders for Collections Strategies, Digital Strategies, Organizational Development Strategies, and Research and Administrative Strategies; the Work Group Leader of Assessment and Planning; and two representatives from the Operations Team. This council discusses library strategy, develops new initiatives, and sets library-wide priorities.

Portfolios: The portfolios are six strategic areas of focus for the library, and the portfolio holders focus on advancing the library's strategic plan.

Northwestern University Library



NORTHWESTERN UNIVERSITY LIBRARIES

OVERSIGHT and ADVISORY RELATIONSHIPS

